

# 5497 Kiswaukee Road, Rockford Illinois

## Professional Office Space

Chicago Rockford International Airport

*Available  
For Lease*



### Building Specifications:

Five available offices

Three - 163 sq. ft.

Two - 197 sq. ft.

Common use areas:

Kitchen/break room

Restrooms

Entrance/exit

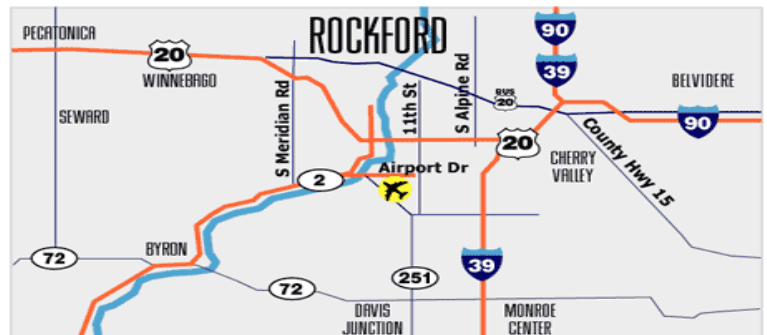
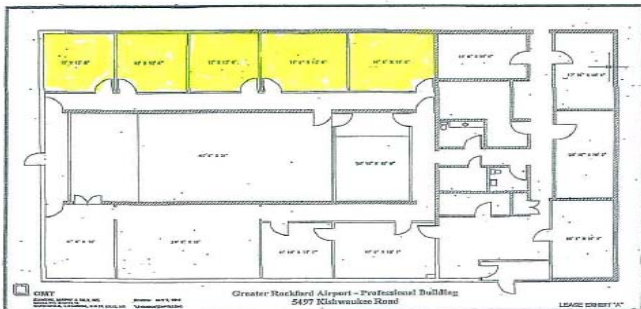
Parking/slots: 25

Possession: Immediate

Lease Price: \$18.84 per sq. ft. and includes: gas, electric, water/sewer, trash removal, lawn care, janitorial service of common areas, snow removal.

High speed internet access available

- Located in Foreign Trade Zone #176
- U.S. Customs located at Airport
- City of Rockford Fire Protection
- Distances: I-90 (10 miles); I-39 (7 miles); Hwy 20 (2 miles); Chicago (86 miles); Milwaukee (102 miles); Madison (84 miles) Rochelle Intermodal Hub (28 miles)



For more information contact:

Carol Moyer

Properties Coordinator

[cmoyer@flyrfd.com](mailto:cmoyer@flyrfd.com)

(815)-969-4466 direct



[FLYRFD.com](http://FLYRFD.com)